

March 8, 2010

# ADDENDUM NO. 1

Ruhnau Ruhnau Clarke

TO THE CONTRACT DOCUMENTS

FOR

BID NO: 07-10

TWO BUNCH PALMS ELEMENTARY SCHOOL  
NEW SCREENWALL & SITE IMPROVEMENTS

FOR THE

PALM SPRINGS UNIFIED SCHOOL DISTRICT  
980 Tahquitz Canyon Way  
Palm Springs, CA 92262

## NOTICE TO BIDDERS

You are hereby notified of the following changes, clarifications or modifications to the original Contract Documents, Project Manual, Drawings, Specifications and subsequent Addenda. This Addendum shall supersede the original Contract Documents, and previous Addenda wherein it contradicts the same and shall take precedence over anything to the contrary therein. All other conditions remain unchanged.

Acknowledge receipt of this Addendum in the space provided on the Bid Form. Failure to do so may disqualify the Bidder.

## CHANGES TO PROJECT MANUAL

### Item 1.1: General Conditions – Article 18 Insurance Requirements

- 1.1.1 Let it be herein clarified that the Contractor Shall Provide *Builder's Risk / "All Risk" Insurance* as specified in *Article 18 Item F* of the General Conditions.

### Item 1.2: Section 02870 – Site Furnishings

- 1.2.1 Add the attached specification section 02870 – Site Furnishings to the project manual in its entirety.

### Item 1.3: Section 08410 – Aluminum Entrances and Storefronts

- 1.3.1 Add Item "F" under Article 2.2 FRAMING, GENERAL as follows:

"F. *Finish: The Framing System Shall Be Provided With The Manufacturer's Bronze Anodized Finish.*"

Palm Springs Unified School District  
Bid 07-10; TBP - New Windscreen & Site Improvements  
Project No. 1-65-07

**Item 1.4:**      **Section 08800 – Glazing**

1.4.1    Revise Article 1.1 Item "A" to read as follows:

        "A.      *Single glass types; Clear Tempered Float Glass.*"

1.4.2    Delete Article 2.1 Item "B" in its entirety.

1.4.3    Revise Article 2.1 Item "C" to read as follows:

        "C.      *Tempered Glass: Provide tempered glass at all locations. Temper glass by horizontal (roller hearth, "tongless") process, to be free of tong marks.*"

1.4.4    Revise Article 2.2 Item "A" to read as follows:

        "A.      *Clear Float Glass: q3 (Glazing Select) quality, Tempered, 1/4-inch thick (DS) float glass.*"

**CHANGES TO DRAWINGS**

**Item 1.5:**      **Drawing AS.1 – Site Plan**

1.5.1    Delete Key Note 2.74 in its entirety.

**Item 1.6:**      **Drawing AS.2**

1.6.1    Delete Key Note 2.233 in its entirety.


1.6.2    Delete Key Note 4.15 in its entirety. All occurrences of Key Note 4.15 shall be revised to Key Note 4.13.

1.6.3    At Detail 11/AS.2 revise reference to detail S/C3.9 to read "18/AD1"

**Item 1.7:**      **Drawing AS.3**

1.7.1    Replace Drawing AS.3 in its entirety with the attached Drawing AS.3 noted as Addendum No. 1.

END OF ADDENDUM NO. 1

  
\_\_\_\_\_  
Roger Clarke, Principal  
#C-21340

**SECTION 02870  
SITE FURNISHINGS**

**PART 1 - GENERAL**

**1.1 SECTION INCLUDES**

- A. Site Seating

**1.2 RELATED SECTIONS**

- A. Section 03300 – Cast in Place Concrete

**1.3 REFERENCES**

- A. ASTM Testing Standards:
  - 1. ASTM B 117 – Standard Practice for Operating Salt Spray (Fog) Apparatus.
  - 2. ASTM D 522 – Standard Test Methods for Mandrel Bend Test of Attached Organic Coatings.
  - 3. ASTM D 523 – Standard Test Method for Specular Gloss.
  - 4. ASTM D 2247 – Standard Practice for Testing Water Resistance of Coatings in 100% Relative Humidity.
  - 5. ASTM D 2794 – Standard Test Method for Resistance of Organic Coatings to the Effects of Rapid Deformation (Impact).
  - 6. ASTM D 3359 – Standard Test Methods for Measuring Adhesion by Tape Test.
  - 7. ASTM D 3363 – Standard Test Method for Film Hardness by Pencil Test.
  - 8. ASTM G 155 – Standard Practice for Operating Xenon Arc Light Apparatus for Exposure of Non-Metallic Materials.
- B. ISO Testing Standards:
  - 1. ISO 1520 – Paints and Varnishes – Cupping Test.
  - 2. ISO 2815 – Paints and Varnishes – Buchholz Indentation Test.
- C. ANSI/BIFMA Testing Standards:
  - 1. ANSI/BIFMA X5.4-2005 – Standard Test for Lounge Seating.

**1.4 SUBMITTALS**

- A. Product Data: Submit manufacturer's product data, storage and handling requirements and recommendations, installation methods and available colors, styles, patterns and textures.
- B. Shop Drawings: Submit manufacturer's shop drawings, including plans and elevations, indicating overall dimensions.
- C. Samples: Submit manufacturer's samples of materials, finishes, and colors.
- D. Warranty: Manufacturer's standard warranty.

**1.5 DELIVERY, STORAGE, AND HANDLING**

- A. Delivery: Deliver materials to site in manufacturer's original, unopened containers and packaging, with labels clearly identifying product name and manufacturer.
- B. Storage: Store materials in clean, dry area in accordance with manufacturer's instructions. Keep materials in manufacturer's original, unopened containers and packaging until installation.

- C. Handling: Protect materials and finish during handling and installation to prevent damage.

## 1.6 WARRANTY

- A. Products will be free from defects in material and/or workmanship for a period of three years from the date of invoice.
- B. The warranty does not apply to damage resulting from accident, alteration, misuse, tampering, negligence, or abuse.
- C. Product, at the option of manufacturer, repair, replace, or refund the purchase price of any items found defective upon inspection by an authorized service representative.
- D. Purchasers should be aware that normal use of these high quality products can result in superficial damage affecting the finish. Scratches, nicks, and dents are to be considered normal wear and tear, and are not the responsibility of the manufacturer.

## PART 2 - PRODUCTS

### 2.1 SITE SEATING

- A. Specified Manufacturer: Landscape Forms, Inc., 431 Lawndale Avenue, Kalamazoo, Michigan 49048. Toll Free (800) 521-2546. Phone (269) 381-0396. Fax (269) 381-3455. Website [www.landscapeforms.com](http://www.landscapeforms.com). E-mail [specify@landscapeforms.com](mailto:specify@landscapeforms.com).
- B. Acceptable Manufacturers: None indicated. Equivalent products of other manufacturers meeting or exceeding physical and performance characteristics of specified products will be considered in accordance with substitution provisions specified in Section 01600 - Product Requirements.
- C. Product: Presidio Seating
  - 1. System Configuration: Straight
  - 2. Seat Style: Backless Straight Seat
    - a. Width: 22-1/2 inches
    - b. Depth: 22 inches
  - 3. Number of Seats: 3 Seat Units
  - 4. Supports: 3 Seat Support
  - 5. Arm Rests: No Arms
  - 6. Mounting: Surface Mounted
  - 7. Fabrication: Shop Fabricated

### 2.2 MATERIALS

- A. Supports: Dual horizontal rail, 2-1/2" diameter, 0.120" wall tubing, with continuous weld end caps. Vertical supports are 2-1/2" diameter 0.120" wall tube with 5-1/2" diameter, 5/16" thick surface plate with (3) – 9/16" diameter mounting holes.
  - 1. Adapters: Adapters are 1/4" thick, stainless steel. They are self-centering clamping style adapters with a single bolt connection.
- B. Seats:
  - 1. Frame: 1-1/4" diameter 0.120" wall tube with four mitered corners. Seat profile follows a reverse bend outline.
  - 2. Insert Panel: Constructed of 5/8" diameter, round, steel rod, welded to frame

## 2.3 FINISH

- A. Finish on Metal: Landscape Forms, Inc. "Pangard II".
1. Primer: Rust inhibitor.
  2. Topcoat: Thermosetting polyester powdercoat. UV, chip, and flake resistant.
  3. Test Results: "Pangard II".
    - a. Gloss, Garner 60 Degrees, ASTM D 523: Plus or minus 5.
    - b. UV Resistance, Color and Gloss, ASTM G 155, Cycle 7: Delta E less than 2 at 2.0 mils and less than 20 percent loss.
    - c. Cross-Hatch Adhesion, ASTM D 3359, Method B: 100 percent pass.
    - d. Flexibility Test, Mandrel, ASTM D 522: 3 mm at 2 mils.
    - e. Erichsen Cupping, ISO 1520: 8 mm.
    - f. Impression Hardness, Buchholz, ISO 2815: 95.
    - g. Impact Test, ASTM D 2794: 60 inches/pound at 2.5 mils.
    - h. Pencil Hardness, ASTM D 3363: 2H minimum.
    - i. Corrosion Resistance, 1,500-Hour Test, ASTM B 117: Max. undercutting 1mm.
    - j. Humidity Resistance, 1,500-Hour Test, ASTM D 2247: Max. blisters 1mm.
    - k. Color: Bronze

## PART 3 - EXECUTION

### 3.1 EXAMINATION

- A. Examine areas to receive seating.
- B. Notify Architect of conditions that would adversely affect installation or subsequent use.
- C. Do not begin installation until unacceptable conditions are corrected.

### 3.2 INSTALLATION

- A. Install in accordance with manufacturer's instructions at locations indicated on the Drawings.
- B. Install level.
- C. Anchor securely in place.

### 3.3 ADJUSTING

- A. Finish Damage: Repair minor damages to finish in accordance with manufacturer's instructions and as approved by Architect.
- B. Component Damage: Remove and replace damaged components that cannot be successfully repaired as determined by Architect.

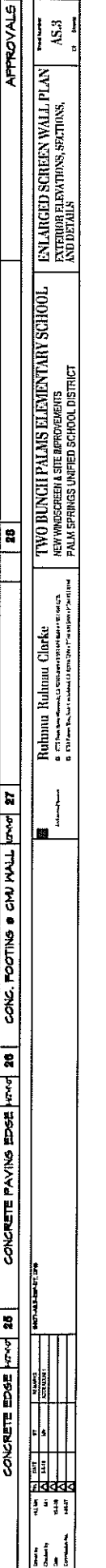
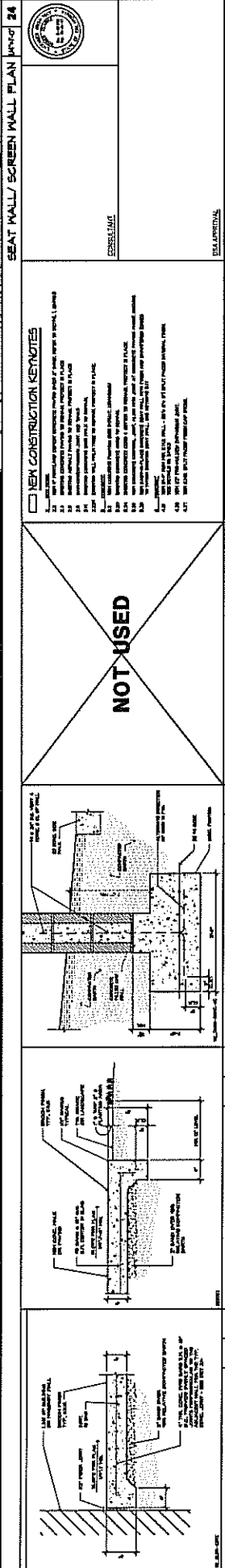
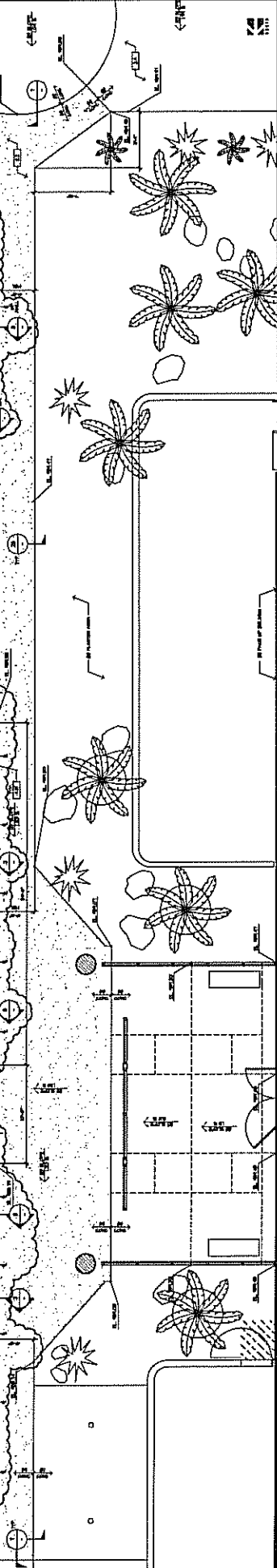
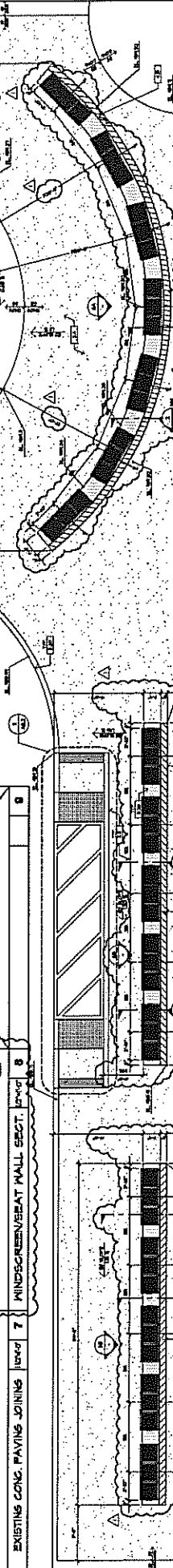
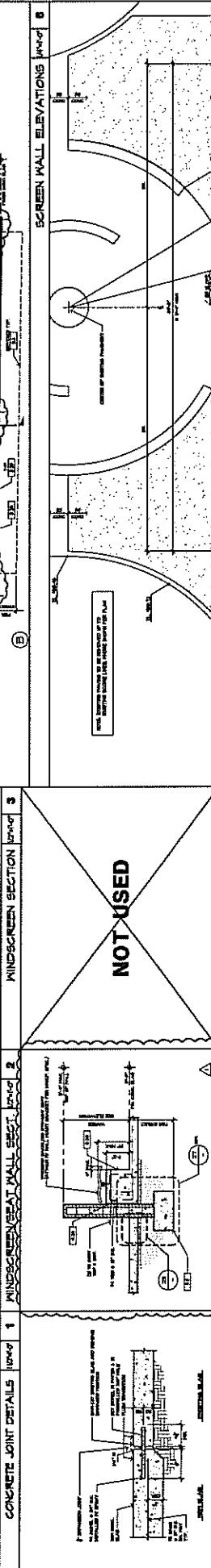
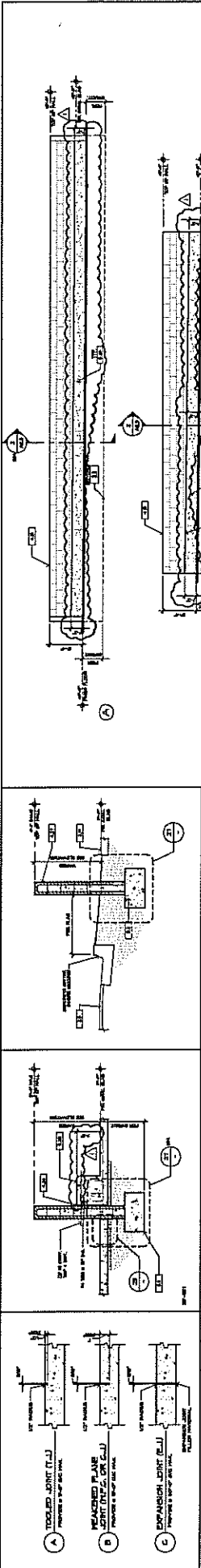
### 3.4 CLEANING

- A. Clean promptly after installation in accordance with manufacturer's instructions.
- B. Do not use harsh cleaning materials or methods that could damage finish.

### 3.5 PROTECTION

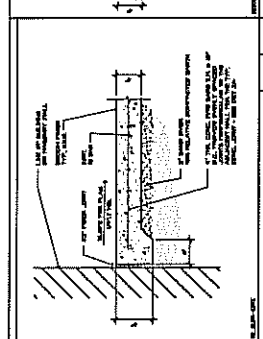
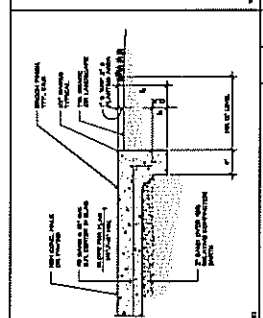
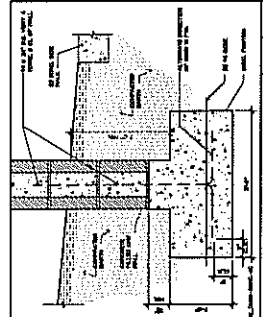
- A. Protect installed to ensure that, except for normal weathering, seating will be without damage or deterioration at time of Substantial Completion.

END OF SECTION



- NEW CONSTRUCTION NOTES**
1. ALL NEW CONSTRUCTION SHALL BE IN ACCORDANCE WITH THE LATEST EDITIONS OF THE CALIFORNIA BUILDING CODE AND ALL APPLICABLE LOCAL ORDINANCES.
  2. ALL NEW CONSTRUCTION SHALL BE IN ACCORDANCE WITH THE LATEST EDITIONS OF THE CALIFORNIA ELECTRICAL CODE AND ALL APPLICABLE LOCAL ORDINANCES.
  3. ALL NEW CONSTRUCTION SHALL BE IN ACCORDANCE WITH THE LATEST EDITIONS OF THE CALIFORNIA MECHANICAL CODE AND ALL APPLICABLE LOCAL ORDINANCES.
  4. ALL NEW CONSTRUCTION SHALL BE IN ACCORDANCE WITH THE LATEST EDITIONS OF THE CALIFORNIA PLUMBING CODE AND ALL APPLICABLE LOCAL ORDINANCES.
  5. ALL NEW CONSTRUCTION SHALL BE IN ACCORDANCE WITH THE LATEST EDITIONS OF THE CALIFORNIA FIRE CODE AND ALL APPLICABLE LOCAL ORDINANCES.
  6. ALL NEW CONSTRUCTION SHALL BE IN ACCORDANCE WITH THE LATEST EDITIONS OF THE CALIFORNIA ENVIRONMENTAL QUALITY ACT AND ALL APPLICABLE LOCAL ORDINANCES.
  7. ALL NEW CONSTRUCTION SHALL BE IN ACCORDANCE WITH THE LATEST EDITIONS OF THE CALIFORNIA LAND USE ACT AND ALL APPLICABLE LOCAL ORDINANCES.
  8. ALL NEW CONSTRUCTION SHALL BE IN ACCORDANCE WITH THE LATEST EDITIONS OF THE CALIFORNIA WATER CODE AND ALL APPLICABLE LOCAL ORDINANCES.
  9. ALL NEW CONSTRUCTION SHALL BE IN ACCORDANCE WITH THE LATEST EDITIONS OF THE CALIFORNIA AIR RESOURCES ACT AND ALL APPLICABLE LOCAL ORDINANCES.
  10. ALL NEW CONSTRUCTION SHALL BE IN ACCORDANCE WITH THE LATEST EDITIONS OF THE CALIFORNIA SOLID WASTE ACT AND ALL APPLICABLE LOCAL ORDINANCES.
  11. ALL NEW CONSTRUCTION SHALL BE IN ACCORDANCE WITH THE LATEST EDITIONS OF THE CALIFORNIA PEST CONTROL ACT AND ALL APPLICABLE LOCAL ORDINANCES.
  12. ALL NEW CONSTRUCTION SHALL BE IN ACCORDANCE WITH THE LATEST EDITIONS OF THE CALIFORNIA FIRE SAFETY ACT AND ALL APPLICABLE LOCAL ORDINANCES.
  13. ALL NEW CONSTRUCTION SHALL BE IN ACCORDANCE WITH THE LATEST EDITIONS OF THE CALIFORNIA EARTHQUAKE SAFETY ACT AND ALL APPLICABLE LOCAL ORDINANCES.
  14. ALL NEW CONSTRUCTION SHALL BE IN ACCORDANCE WITH THE LATEST EDITIONS OF THE CALIFORNIA DISABILITY ACCESS ACT AND ALL APPLICABLE LOCAL ORDINANCES.
  15. ALL NEW CONSTRUCTION SHALL BE IN ACCORDANCE WITH THE LATEST EDITIONS OF THE CALIFORNIA HISTORIC PRESERVATION ACT AND ALL APPLICABLE LOCAL ORDINANCES.
  16. ALL NEW CONSTRUCTION SHALL BE IN ACCORDANCE WITH THE LATEST EDITIONS OF THE CALIFORNIA CULTURAL HERITAGE ACT AND ALL APPLICABLE LOCAL ORDINANCES.
  17. ALL NEW CONSTRUCTION SHALL BE IN ACCORDANCE WITH THE LATEST EDITIONS OF THE CALIFORNIA ANTI-CORRUPTION ACT AND ALL APPLICABLE LOCAL ORDINANCES.
  18. ALL NEW CONSTRUCTION SHALL BE IN ACCORDANCE WITH THE LATEST EDITIONS OF THE CALIFORNIA GOVERNANCE ACT AND ALL APPLICABLE LOCAL ORDINANCES.
  19. ALL NEW CONSTRUCTION SHALL BE IN ACCORDANCE WITH THE LATEST EDITIONS OF THE CALIFORNIA PUBLIC ACCESS ACT AND ALL APPLICABLE LOCAL ORDINANCES.
  20. ALL NEW CONSTRUCTION SHALL BE IN ACCORDANCE WITH THE LATEST EDITIONS OF THE CALIFORNIA OPEN SPACE ACT AND ALL APPLICABLE LOCAL ORDINANCES.
  21. ALL NEW CONSTRUCTION SHALL BE IN ACCORDANCE WITH THE LATEST EDITIONS OF THE CALIFORNIA RECREATION ACT AND ALL APPLICABLE LOCAL ORDINANCES.
  22. ALL NEW CONSTRUCTION SHALL BE IN ACCORDANCE WITH THE LATEST EDITIONS OF THE CALIFORNIA SCENIC PRESERVATION ACT AND ALL APPLICABLE LOCAL ORDINANCES.
  23. ALL NEW CONSTRUCTION SHALL BE IN ACCORDANCE WITH THE LATEST EDITIONS OF THE CALIFORNIA VISUAL QUALITY ACT AND ALL APPLICABLE LOCAL ORDINANCES.
  24. ALL NEW CONSTRUCTION SHALL BE IN ACCORDANCE WITH THE LATEST EDITIONS OF THE CALIFORNIA VISUAL QUALITY IMPROVEMENT ACT AND ALL APPLICABLE LOCAL ORDINANCES.
  25. ALL NEW CONSTRUCTION SHALL BE IN ACCORDANCE WITH THE LATEST EDITIONS OF THE CALIFORNIA VISUAL QUALITY IMPROVEMENT ACT AND ALL APPLICABLE LOCAL ORDINANCES.
  26. ALL NEW CONSTRUCTION SHALL BE IN ACCORDANCE WITH THE LATEST EDITIONS OF THE CALIFORNIA VISUAL QUALITY IMPROVEMENT ACT AND ALL APPLICABLE LOCAL ORDINANCES.
  27. ALL NEW CONSTRUCTION SHALL BE IN ACCORDANCE WITH THE LATEST EDITIONS OF THE CALIFORNIA VISUAL QUALITY IMPROVEMENT ACT AND ALL APPLICABLE LOCAL ORDINANCES.
  28. ALL NEW CONSTRUCTION SHALL BE IN ACCORDANCE WITH THE LATEST EDITIONS OF THE CALIFORNIA VISUAL QUALITY IMPROVEMENT ACT AND ALL APPLICABLE LOCAL ORDINANCES.
  29. ALL NEW CONSTRUCTION SHALL BE IN ACCORDANCE WITH THE LATEST EDITIONS OF THE CALIFORNIA VISUAL QUALITY IMPROVEMENT ACT AND ALL APPLICABLE LOCAL ORDINANCES.
  30. ALL NEW CONSTRUCTION SHALL BE IN ACCORDANCE WITH THE LATEST EDITIONS OF THE CALIFORNIA VISUAL QUALITY IMPROVEMENT ACT AND ALL APPLICABLE LOCAL ORDINANCES.
  31. ALL NEW CONSTRUCTION SHALL BE IN ACCORDANCE WITH THE LATEST EDITIONS OF THE CALIFORNIA VISUAL QUALITY IMPROVEMENT ACT AND ALL APPLICABLE LOCAL ORDINANCES.
  32. ALL NEW CONSTRUCTION SHALL BE IN ACCORDANCE WITH THE LATEST EDITIONS OF THE CALIFORNIA VISUAL QUALITY IMPROVEMENT ACT AND ALL APPLICABLE LOCAL ORDINANCES.
  33. ALL NEW CONSTRUCTION SHALL BE IN ACCORDANCE WITH THE LATEST EDITIONS OF THE CALIFORNIA VISUAL QUALITY IMPROVEMENT ACT AND ALL APPLICABLE LOCAL ORDINANCES.
  34. ALL NEW CONSTRUCTION SHALL BE IN ACCORDANCE WITH THE LATEST EDITIONS OF THE CALIFORNIA VISUAL QUALITY IMPROVEMENT ACT AND ALL APPLICABLE LOCAL ORDINANCES.
  35. ALL NEW CONSTRUCTION SHALL BE IN ACCORDANCE WITH THE LATEST EDITIONS OF THE CALIFORNIA VISUAL QUALITY IMPROVEMENT ACT AND ALL APPLICABLE LOCAL ORDINANCES.
  36. ALL NEW CONSTRUCTION SHALL BE IN ACCORDANCE WITH THE LATEST EDITIONS OF THE CALIFORNIA VISUAL QUALITY IMPROVEMENT ACT AND ALL APPLICABLE LOCAL ORDINANCES.
  37. ALL NEW CONSTRUCTION SHALL BE IN ACCORDANCE WITH THE LATEST EDITIONS OF THE CALIFORNIA VISUAL QUALITY IMPROVEMENT ACT AND ALL APPLICABLE LOCAL ORDINANCES.
  38. ALL NEW CONSTRUCTION SHALL BE IN ACCORDANCE WITH THE LATEST EDITIONS OF THE CALIFORNIA VISUAL QUALITY IMPROVEMENT ACT AND ALL APPLICABLE LOCAL ORDINANCES.
  39. ALL NEW CONSTRUCTION SHALL BE IN ACCORDANCE WITH THE LATEST EDITIONS OF THE CALIFORNIA VISUAL QUALITY IMPROVEMENT ACT AND ALL APPLICABLE LOCAL ORDINANCES.
  40. ALL NEW CONSTRUCTION SHALL BE IN ACCORDANCE WITH THE LATEST EDITIONS OF THE CALIFORNIA VISUAL QUALITY IMPROVEMENT ACT AND ALL APPLICABLE LOCAL ORDINANCES.
  41. ALL NEW CONSTRUCTION SHALL BE IN ACCORDANCE WITH THE LATEST EDITIONS OF THE CALIFORNIA VISUAL QUALITY IMPROVEMENT ACT AND ALL APPLICABLE LOCAL ORDINANCES.
  42. ALL NEW CONSTRUCTION SHALL BE IN ACCORDANCE WITH THE LATEST EDITIONS OF THE CALIFORNIA VISUAL QUALITY IMPROVEMENT ACT AND ALL APPLICABLE LOCAL ORDINANCES.
  43. ALL NEW CONSTRUCTION SHALL BE IN ACCORDANCE WITH THE LATEST EDITIONS OF THE CALIFORNIA VISUAL QUALITY IMPROVEMENT ACT AND ALL APPLICABLE LOCAL ORDINANCES.
  44. ALL NEW CONSTRUCTION SHALL BE IN ACCORDANCE WITH THE LATEST EDITIONS OF THE CALIFORNIA VISUAL QUALITY IMPROVEMENT ACT AND ALL APPLICABLE LOCAL ORDINANCES.
  45. ALL NEW CONSTRUCTION SHALL BE IN ACCORDANCE WITH THE LATEST EDITIONS OF THE CALIFORNIA VISUAL QUALITY IMPROVEMENT ACT AND ALL APPLICABLE LOCAL ORDINANCES.
  46. ALL NEW CONSTRUCTION SHALL BE IN ACCORDANCE WITH THE LATEST EDITIONS OF THE CALIFORNIA VISUAL QUALITY IMPROVEMENT ACT AND ALL APPLICABLE LOCAL ORDINANCES.
  47. ALL NEW CONSTRUCTION SHALL BE IN ACCORDANCE WITH THE LATEST EDITIONS OF THE CALIFORNIA VISUAL QUALITY IMPROVEMENT ACT AND ALL APPLICABLE LOCAL ORDINANCES.
  48. ALL NEW CONSTRUCTION SHALL BE IN ACCORDANCE WITH THE LATEST EDITIONS OF THE CALIFORNIA VISUAL QUALITY IMPROVEMENT ACT AND ALL APPLICABLE LOCAL ORDINANCES.
  49. ALL NEW CONSTRUCTION SHALL BE IN ACCORDANCE WITH THE LATEST EDITIONS OF THE CALIFORNIA VISUAL QUALITY IMPROVEMENT ACT AND ALL APPLICABLE LOCAL ORDINANCES.
  50. ALL NEW CONSTRUCTION SHALL BE IN ACCORDANCE WITH THE LATEST EDITIONS OF THE CALIFORNIA VISUAL QUALITY IMPROVEMENT ACT AND ALL APPLICABLE LOCAL ORDINANCES.

NOT USED



| NO. | DATE     | BY | CHKD. | APP'D. | DESCRIPTION                   |
|-----|----------|----|-------|--------|-------------------------------|
| 1   | 11/11/21 | AS | AS    | AS     | CONCRETE EDGE                 |
| 2   | 11/11/21 | AS | AS    | AS     | CONCRETE PAVING EDGE          |
| 3   | 11/11/21 | AS | AS    | AS     | CONC. FOOTING & CURB WALL     |
| 4   | 11/11/21 | AS | AS    | AS     | NOT USED                      |
| 5   | 11/11/21 | AS | AS    | AS     | SCREEN WALL ELEVATIONS        |
| 6   | 11/11/21 | AS | AS    | AS     | SEAT MALLY SCREEN WALL PLAN   |
| 7   | 11/11/21 | AS | AS    | AS     | EXISTING CONC. PAVING JOINING |
| 8   | 11/11/21 | AS | AS    | AS     | MINDSCREEN SEAT WALL SECT.    |
| 9   | 11/11/21 | AS | AS    | AS     | MINDSCREEN SEAT WALL SECT.    |
| 10  | 11/11/21 | AS | AS    | AS     | CONCRETE JOINT DETAILS        |

**APPROVALS**

DESIGNER: [Signature]

CHECKED: [Signature]

APPROVED: [Signature]

**ENLARGED SCREEN WALL PLAN**  
EXTERIOR ELEVATIONS, SECTIONS,  
AND DETAILS

**TWO BUNCH PALMS ELEMENTARY SCHOOL**  
NEW WOODSCREEN & SITE IMPROVEMENTS  
PALM SPRINGS UNIFIED SCHOOL DISTRICT

Robynna Robinson Clarke  
27777 North Palm Springs Blvd., Suite 100, Palm Springs, CA 92262  
P: 760.326.1234 F: 760.326.1235 E: rclarke@robsonclarke.com

Project No: 21-0001  
Sheet No: 24 of 24  
Date: 11/11/21